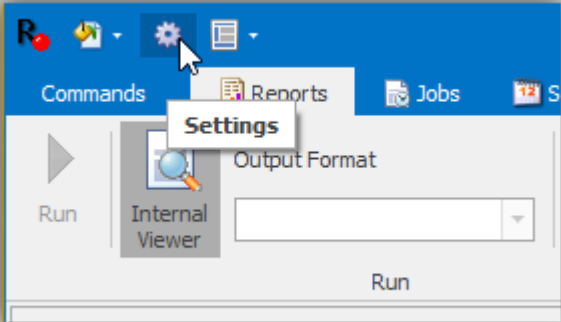
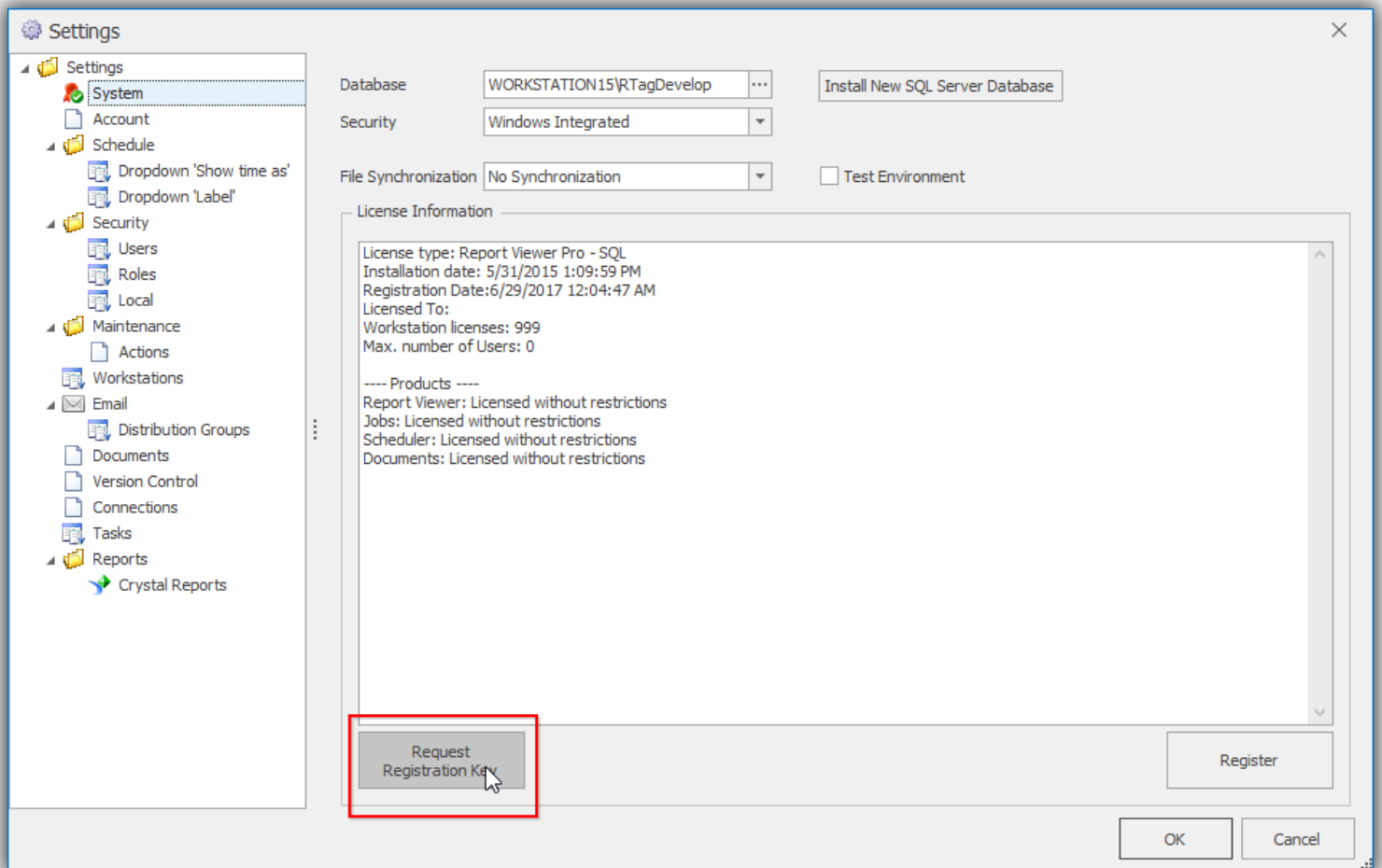


## Register R-Tag products

1. Open settings dialog



2. Click the button "Request Registration Key"



3. Select the license type you want to register, insert the company name and click button "Generate".

Registration Key Request

License: R-Tag Crystal Reports Documentation and Version Control

Company name: Company name

Workstations: 1 [Price list](#)

Report Types:

- Crystal Reports
- SAP Business Objects
- SSRS
- Ad - hoc SQL queries
- Dynamic Dashboards

Options:

- Scheduler
- Data Driven Reports
- Central Server Reports
- Version Control and Report Documentation Tool

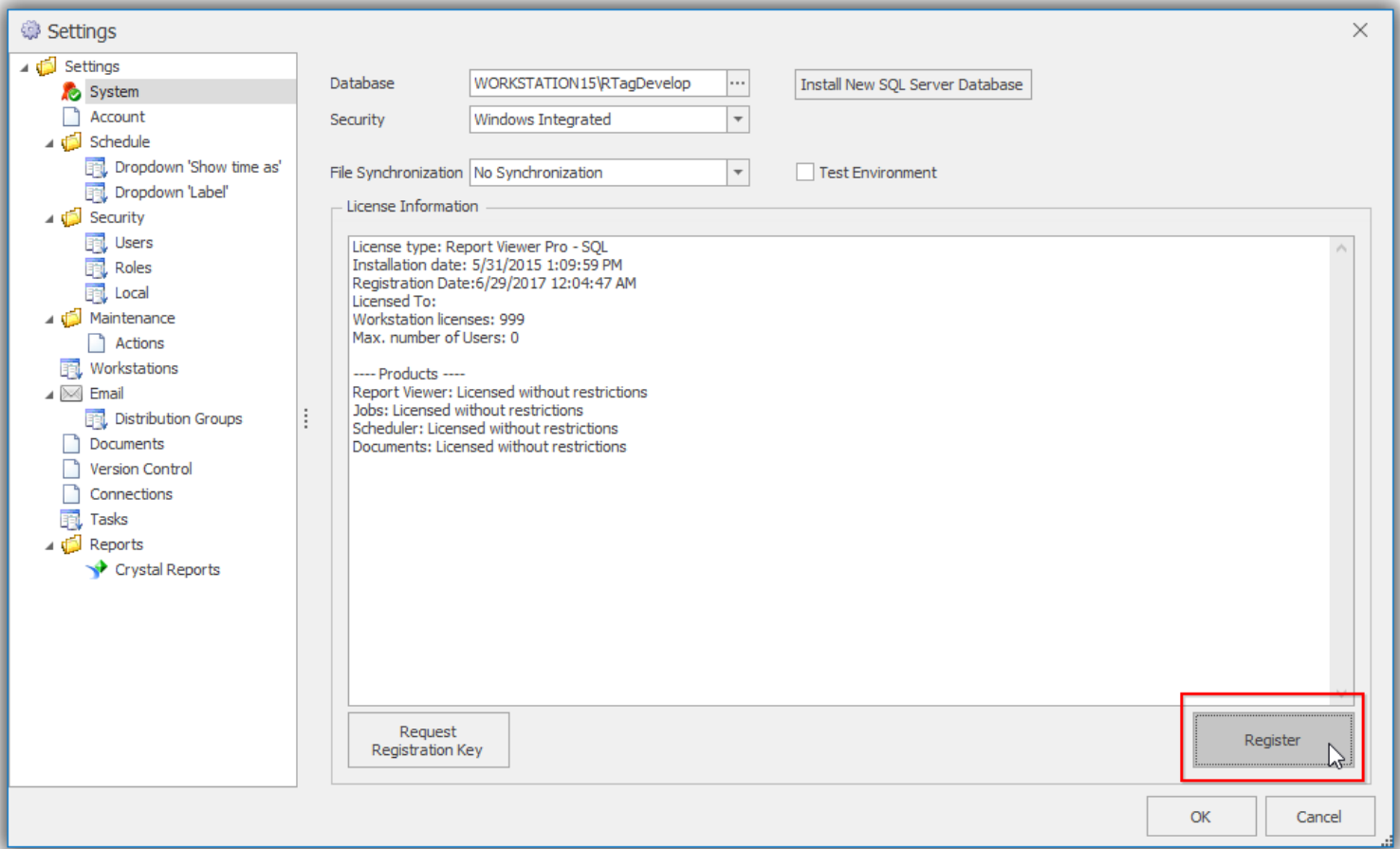
License Description: Documentation and version control for Crystal Reports

Request ID: [Empty field]

Buttons: Generate, Generate & E-mail

Copy the generated key from the field "RequestID" and send it to support@r-tag.com. You can also use button "Generate & E-mail" and R-Tag will generate an e-mail message and open it in your default e-mail client so you can send it.

4. When you receive the registration, key click button "Register".



5. Paste the key in the field "Registration Key" and click OK.

R-Tag Registration

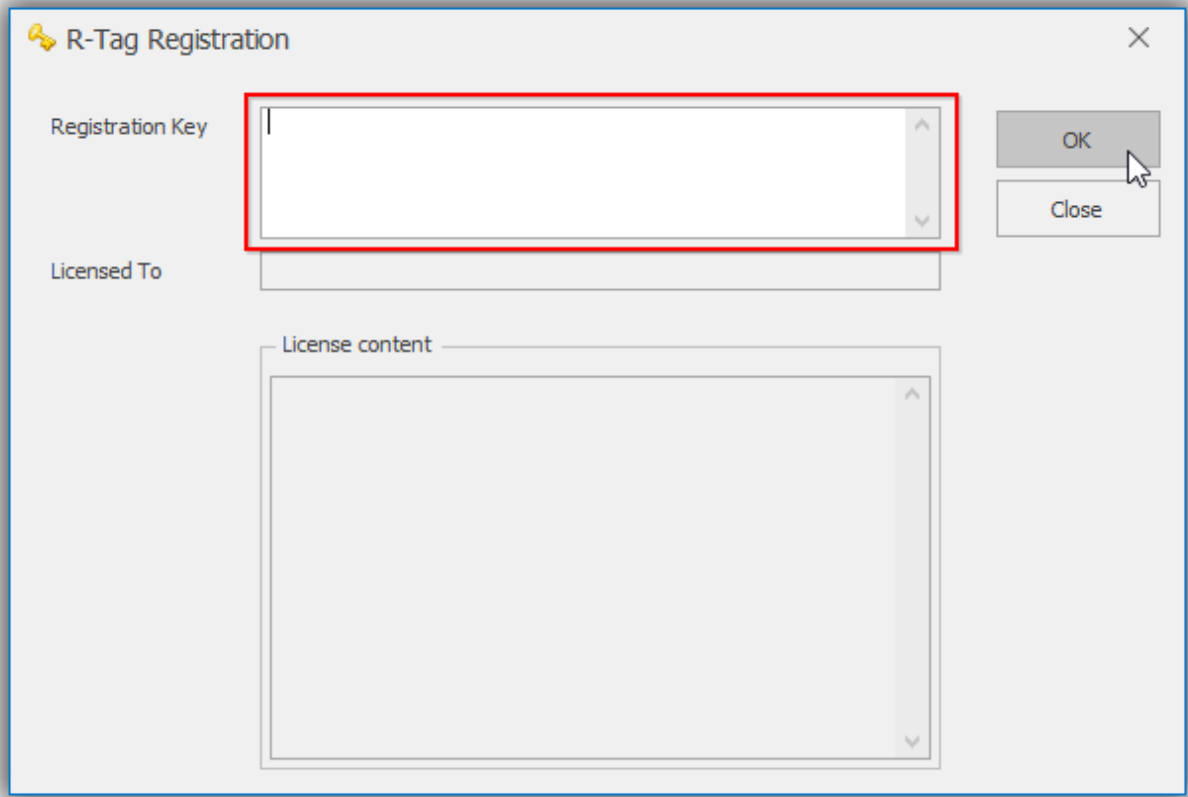
Registration Key

Licensed To

License content

OK

Close

The image shows a software dialog box titled "R-Tag Registration". It has a standard Windows-style title bar with a close button (X) in the top right corner. The dialog contains three main input areas: a "Registration Key" field, a "Licensed To" field, and a "License content" text area. The "Registration Key" field is currently empty and is highlighted with a red rectangular border. To the right of these fields are two buttons: "OK" and "Close". A mouse cursor is positioned over the "OK" button, indicating it is about to be clicked. The "License content" area is a large, empty text box with a vertical scrollbar on the right side.