

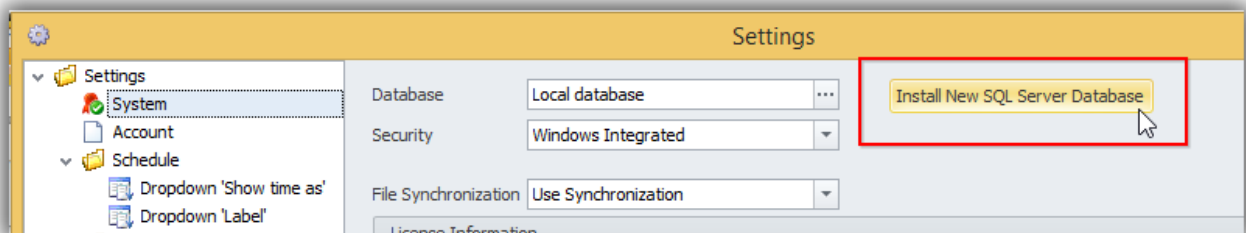
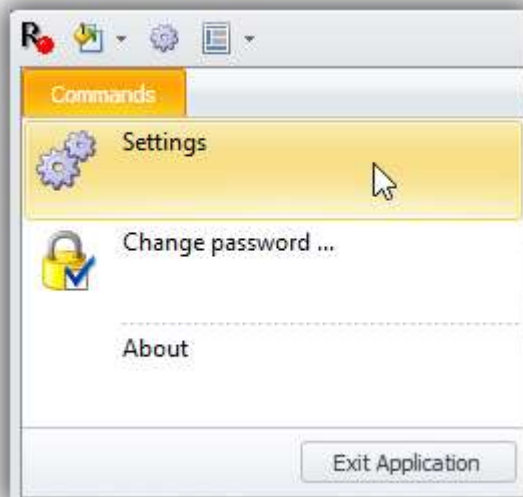
Installing SQL Server database for R-Tag Version Control for Crystal Reports

Please download and install R-Tag Report Manager software from this page:

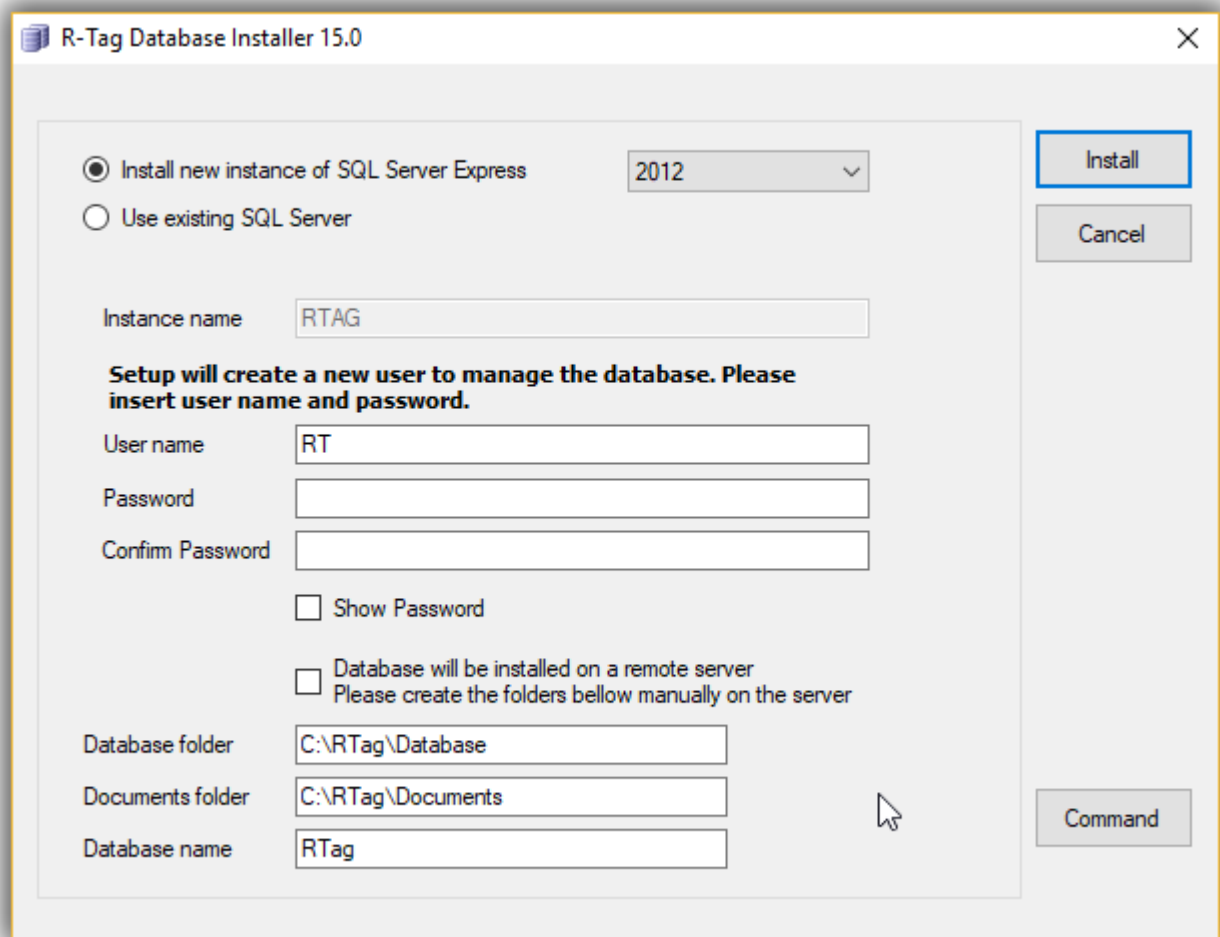
<http://www.r-tag.com/Pages/Downloads.aspx>

After installing, by default you will be connected to a local database. This database is good for testing some basic features like running and scheduling reports. In order to use advanced features like Version control or Documentation and Search you will need to configure a SQL Server database.

The easiest way to do this is to open Settings and click "Install New SQ Server Database" button



Installing new SQL Server Express instance and R-Tag database

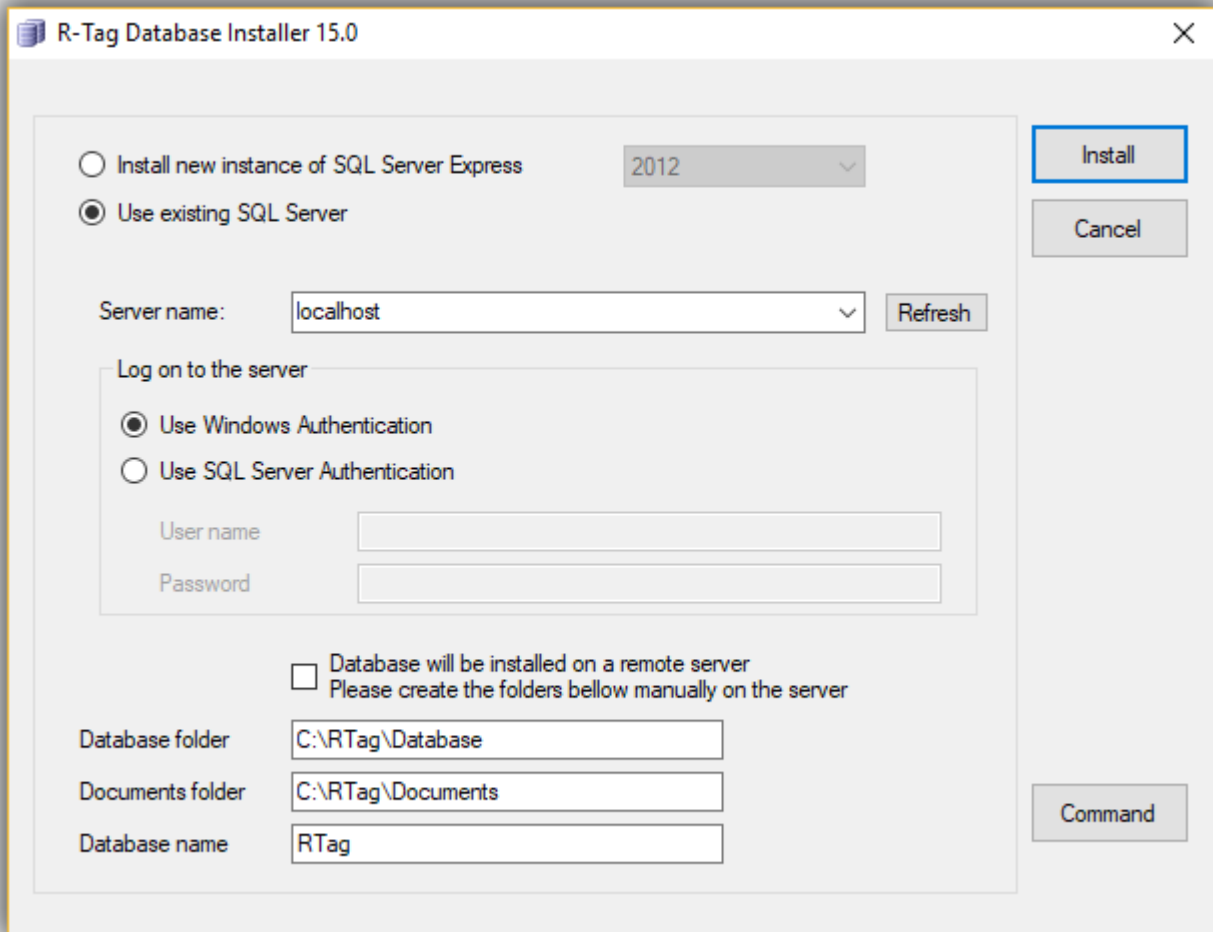


1. Select “Install new instance of SQL Server Express” and select the desired version. 2008 and 2012 versions are available.
2. Set User name and password to use when you access this SQL instance
3. If necessary change the default paths to R-Tag Database and Documents folders.
4. Click install

Installing R-Tag database on an existing SQL Server

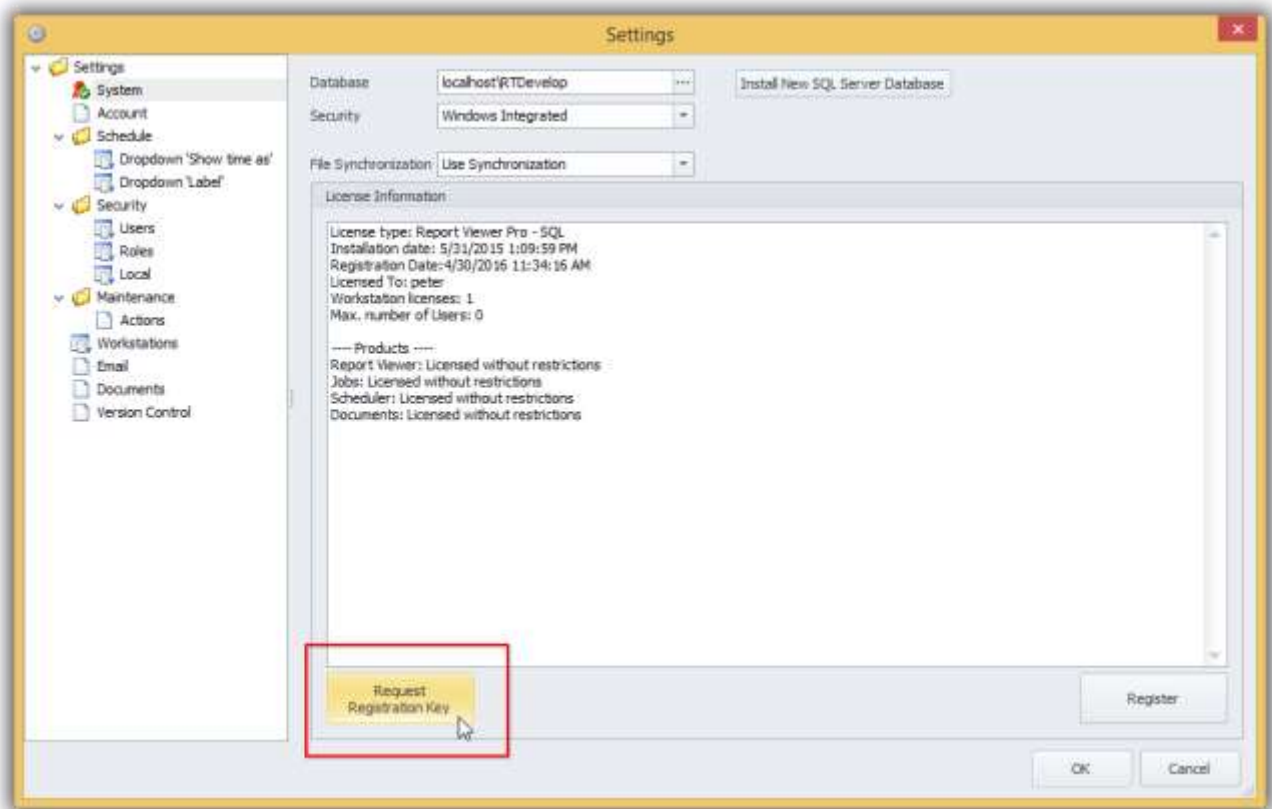
Requirements: SQL Server 2008 or above with enabled FileStream option.

To enable FileStream option please follow the steps in this article: [https://technet.microsoft.com/en-us/library/cc645923\(v=sql.100\).aspx](https://technet.microsoft.com/en-us/library/cc645923(v=sql.100).aspx) . Please make sure that the FileStream option is enabled before to start database installer.

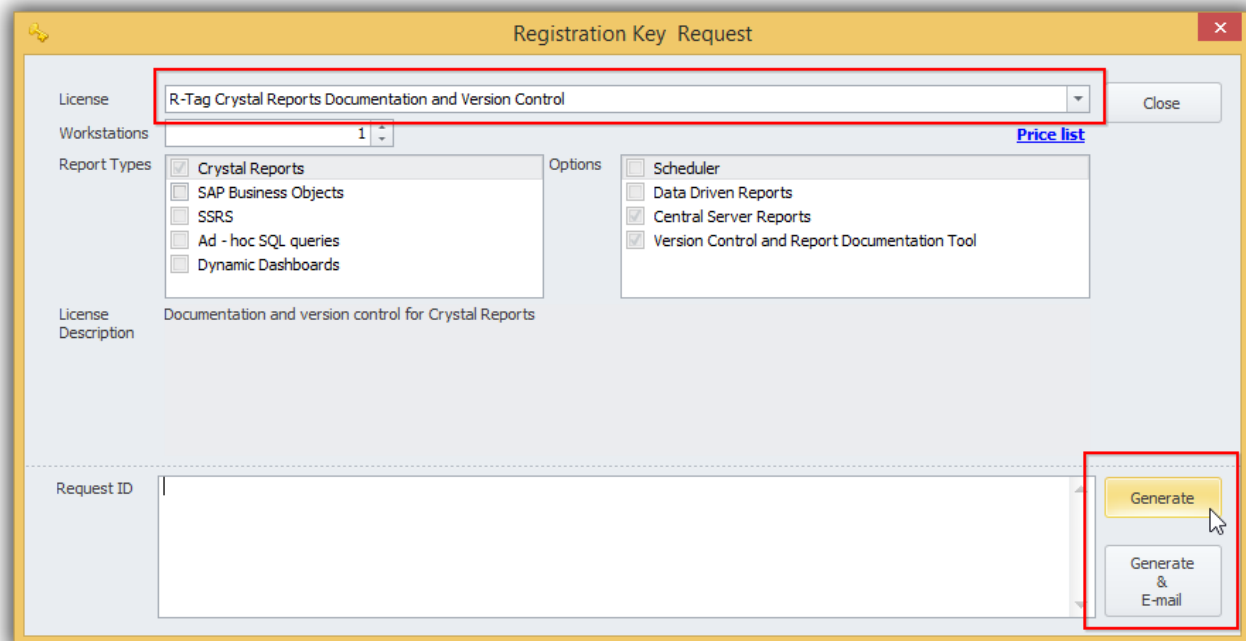


1. Select “use existing SQL Server”
2. Type the name of the server or click Refresh and select it
3. Set Log on information.
4. If the SQL Server is on another machine please check the check box “Database will be installed on a remote server” and create there the database and documents folders manually. If the SQL server is on the same machine where you are running R-Tag, R-Tag will create these folders.
5. If necessary change the default paths to R-Tag Database and Documents folders.
6. Click install

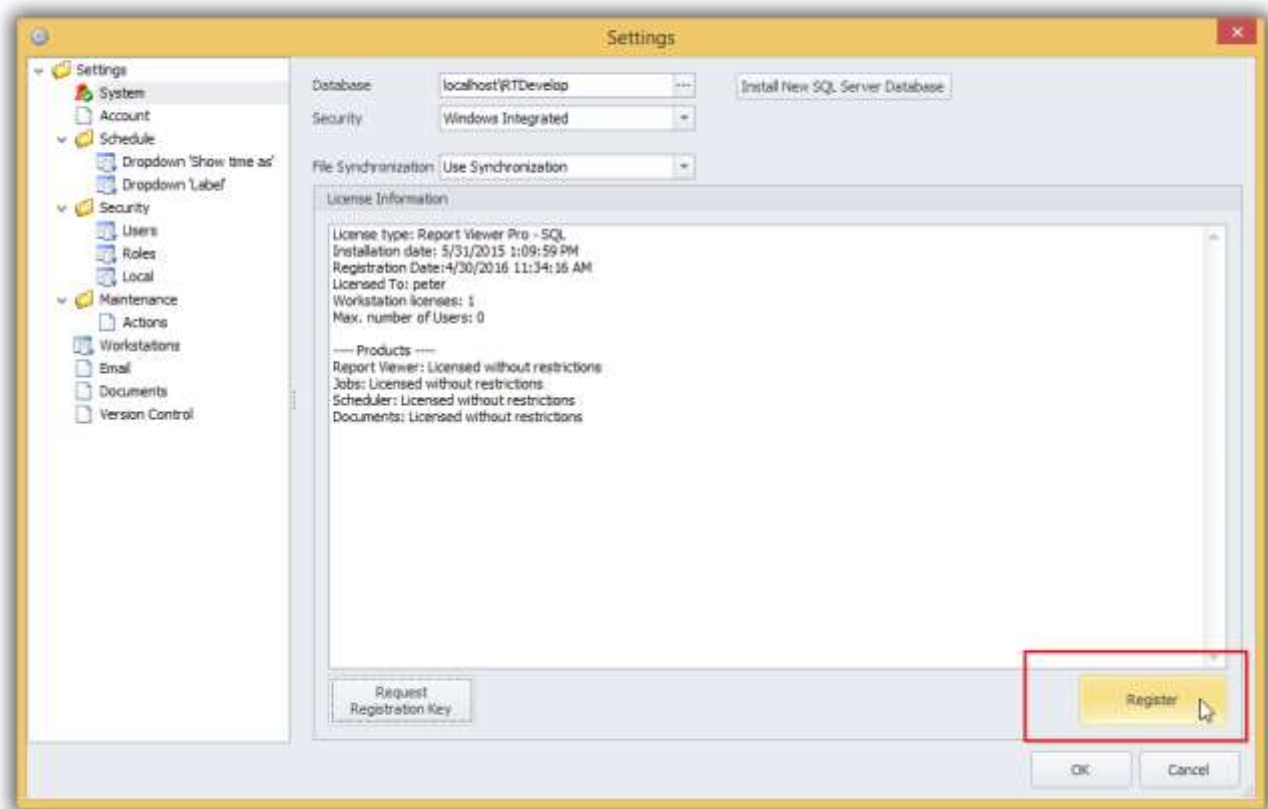
After the installation is finished R-Tag will ask you to restart the software and will connect to the new database. Click “Request Registration Key” button



In the Registration request dialog select Version control and click “Generate” or “Generate & Email” to generate the Request ID. Send us the generated Request ID



We will send you a key, which will enable Version control. Please use the button “Register” to insert the key.



Once the key is inserted R-Tag will restart and you will be able to use all the features available in R-Tag Version Control.

You can find information how to use R-Tag Version Control on this page:
<http://www.r-tag.com/Pages/VersionControl.aspx>