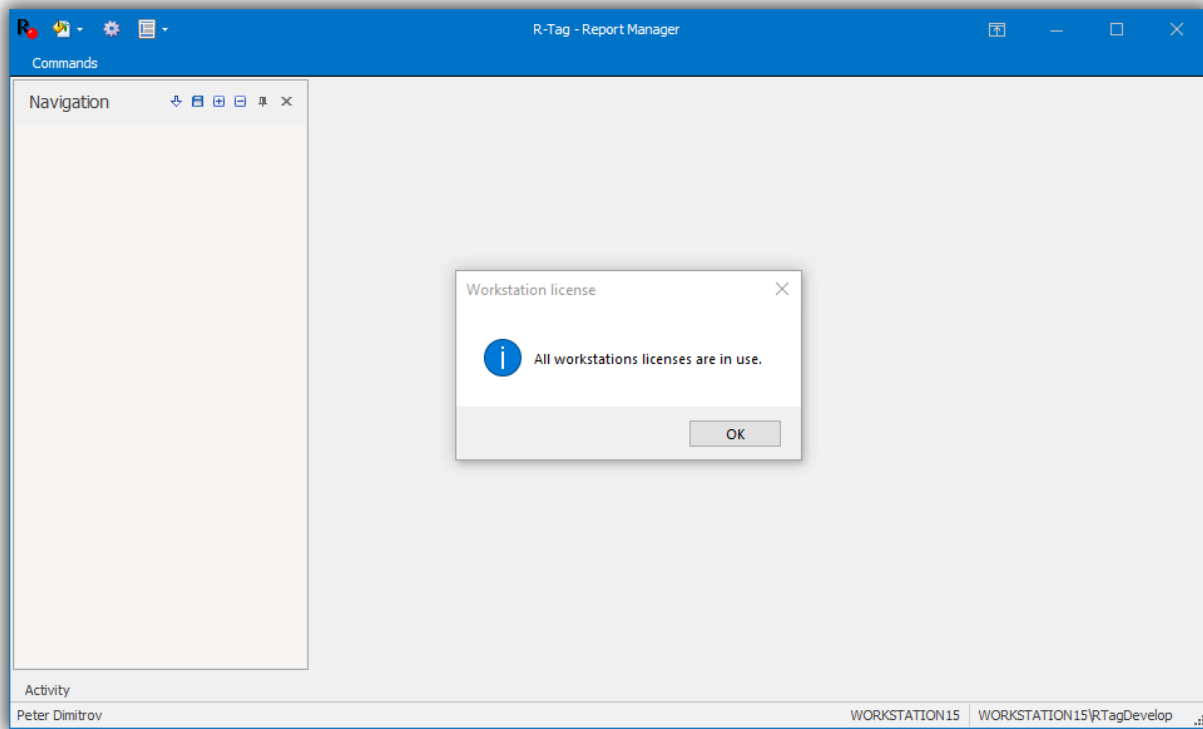
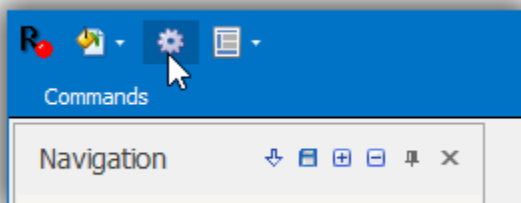


How to solve “All workstations licenses are in use.”?

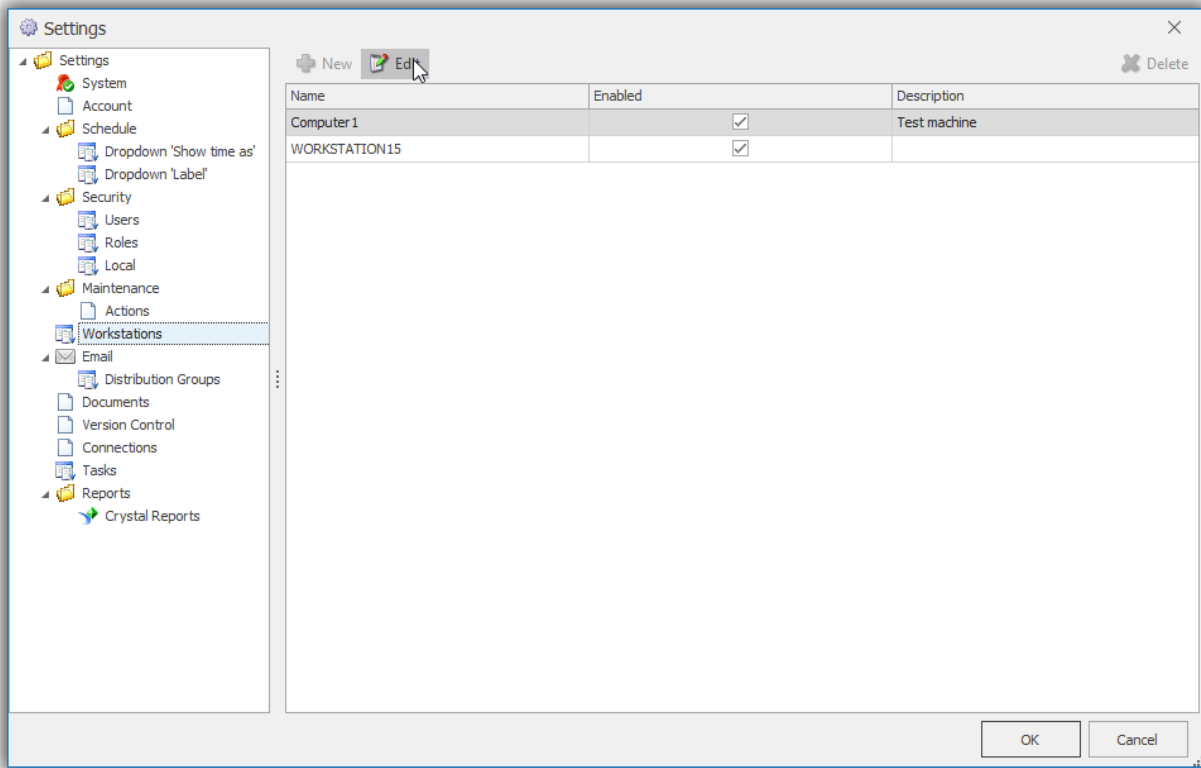
This message is shown when you install R-Tag on more computers than your license allows. A possible reason might be a hardware upgrade, when R-Tag is moved on a new computer and the old one is retired. To resolve the issue you need to disable the old computer in R-Tag. Here is how to do so:



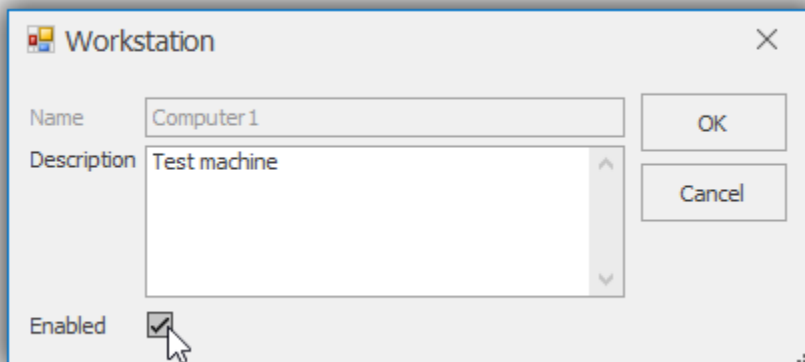
Open settings



Select “Workstations” node, select the workstation, which you don’t want to use anymore and click Edit



Uncheck check box "Enabled" and click OK



Restart R-Tag in order to load the new workstation settings